

Investment Profile

CONSTRUCTION LAND

3.2481 hectares

Floreni village, Anenii Noi district, 2024



Guvernul Republicii Moldova
Agenția Proprietății Publice



Key Details

Land Use:

Construction Land

Area:

3.2481 hectares

Location:

Floreni village, Anenii Noi district

Cadastral Number:

1027101.697

Boundary Type:

General boundaries

Terrain:

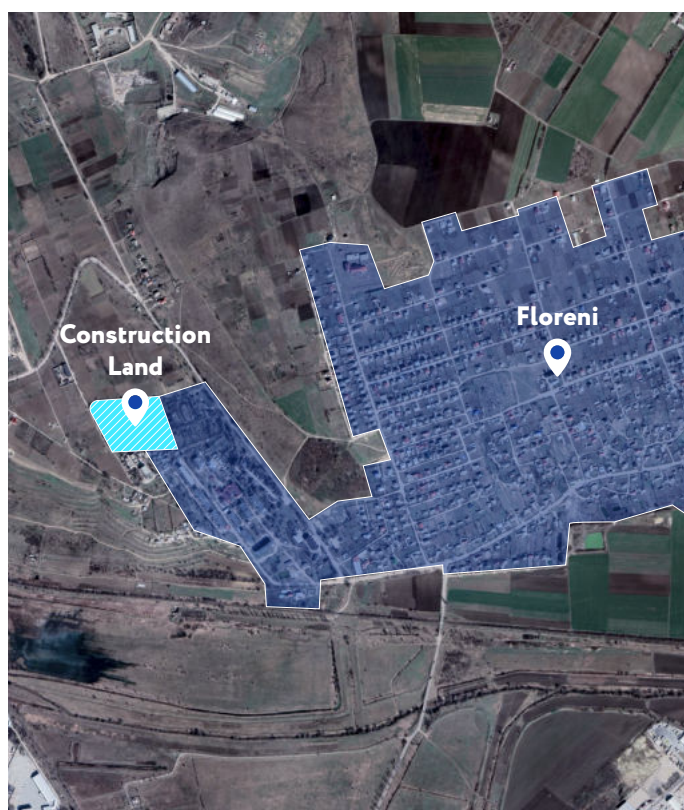
Regular with a slight slope, accessible via dirt roads

Neighborhood Context:

Situated in a growing residential and commercial area

Overview

This construction land located in Floreni Village, Anenii Noi district, presents a lucrative investment opportunity. Spanning an **area of 3.2481 hectares**, the site is perfect for various development projects.



Strategic Location

Floreni village

Historical Background:

Floreni, established in 1859, combines cultural heritage with modern development strategies.

Population:

4,005 residents across 1,185 households.

Cultural Landmarks:

Notably, the Church "Acoperământul Maicii Domnului".

Sustainable Development:

Committed to a Sustainable Energy and Climate Action Plan (PAEDC), the village aligns with Moldova's energy reduction and environmental cleanliness goals.

Infrastructure Projects:

Participation in the European Village Program, including notable projects like the construction of two potable water reservoirs.

Floreni

Distance from the capital Chisinau: **16 km**

Distance to the regional road R2: **4.5 km**

CHIȘINĂU

R2

ANENII NOI

R2



Investment Potential

The land is prime for development into residential, commercial, or mixed-use properties. Its geographical and infrastructural advantages, coupled with the potential for diverse development projects, make it an attractive proposition for investors looking to capitalize on Moldova's growth trajectory.

Privatization Status

This property is listed for privatization and is in the preparatory phase for such proceedings. Potential investors should remain updated through:



Invest Moldova Agency

www.invest.gov.md



Public Property Agency

www.app.gov.md